



Lesson 3: Representations of a Line

Student Outcomes

- Students graph a line specified by a linear function.
- Students graph a line specified by an initial value and rate of change of a function and construct the linear function by interpreting the graph.
- Students graph a line specified by two points of a linear relationship and provide the linear function.

Lesson Notes

Linear functions are defined by the equations of a line. This lesson reviews students' work with the representation of a line and, in particular, the determination of the rate of change and the initial value of a linear function from two points on the graph or from the equation of the line defined by the function in the form $y = mx + b$ or an equivalent form. Students interpret the rate of change and the initial value based on the graph of the equation of the line in addition to the context of the variables.

Classwork

Example 1 (10 minutes): Rate of Change and Initial Value Given in the Context of the Problem

Here, verbal information giving an initial value and a rate of change is translated into a function and its graph. Work through the example as a class.

In part (b), explain why the value 0.5 given in the question is the rate of change.

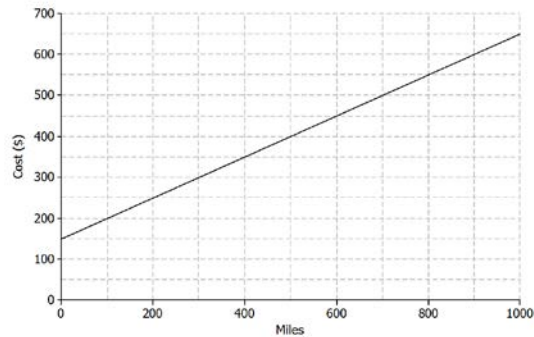
- It would be a good idea to show this on the graph, demonstrating that each increase of 1 unit for m (miles) results in an increase for 0.5 in the C (cost). An increase of 1,000 for m will result in an increase of 500 units for C .
- Point out that if the question stated that each mile driven *reduced* the cost by \$0.50, then the line would have negative slope.

It is important for students to understand that when the scales on the two axes are different, the rate of change cannot be used to plot points by simply counting the squares. Encourage students to use the rate of change by holding on to the idea of increasing the variable shown on the horizontal axis and showing the resulting increase in the variable shown on the vertical axis (as explained in the previous paragraph).

Given the rate of change and initial value, the linear function can be written in slope-intercept form ($y = mx + b$) or an equivalent form such as $y = a + bx$. Students should pay careful attention to variables presented in the problem; m and C are used in place of x and y .

Example 1: Rate of Change and Initial Value Given in the Context of the Problem

A truck rental company charges a \$150 rental fee in addition to a charge of \$0.50 per mile driven. In this problem, you will graph the linear function relating the total cost of the rental in dollars, C , to the number of miles driven, m , on the axes below.



- If the truck is driven 0 miles, what will be the cost to the customer? How will this be shown on the graph?
\$150, shown as the point (0, 150). This is the initial value. Some students might say “b.” Help them to use the term “initial value.”
- What is the rate of change that relates cost to number of miles driven? Explain what it means within the context of the problem.
The rate of change is 0.5. It means that the cost will increase by \$0.50 for every mile driven.
- On the axes given, sketch the graph of the linear function that relates C to m .
Students can plot the initial value (0, 150) and then use the rate of change to identify additional points as needed. A 1,000 unit increase in m results in a 500 unit increase for C , so another point on the line is (1000, 650).
- Write the equation of the linear function that models the relationship between number of miles driven and total rental cost.
 $C = 0.5m + 150$

Exercises 1–5 (10 minutes)

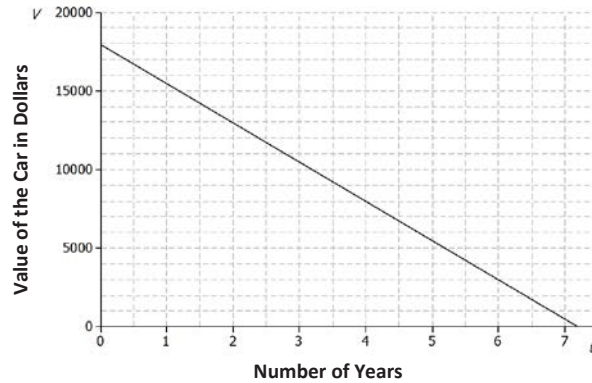
Here, students have an opportunity to practice the ideas to which they have just been introduced. Let students work independently on these exercises. Then, discuss and confirm answers as a class.

Exercise 3, part (c) provides an excellent opportunity for discussion about the model and whether or not it continues to make sense over time.

- In Exercise 3, you found that the price of the car in year seven was less than \$600. Does this make sense in general?
 - *Not really.*
- Under what conditions might the car be worth less than \$600 after seven years?
 - *The car may have been in an accident or damaged.*

Exercises

Jenna bought a used car for \$18,000. She has been told that the value of the car is likely to decrease by \$2,500 for each year that she owns the car. Let the value of the car in dollars be V and the number of years Jenna has owned the car be t .



- What is the value of the car when $t = 0$? Show this point on the graph.
\$18,000. *Shown by the point (0, 18000).*
- What is the rate of change that relates V to t ? (Hint: Is it positive or negative? How can you tell?)
-2,500. *The rate of change is negative because the value of the car is decreasing.*
- Find the value of the car when
 - $t = 1$.
 $18000 - 2500 = \$15500$
 - $t = 2$.
 $18000 - 2(2500) = \$13000$
 - $t = 7$.
 $18000 - 7(2500) = \$500$
- Plot the points for the values you found in Exercise 3, and draw the line (using a straight-edge) that passes through those points.
See graph above.
- Write the linear function that models the relationship between the number of years Jenna has owned the car and the value of the car.
 $V = 18000 - 2500t$ or $V = -2,500t + 18000$

MP.7

Exercises 6–10 (10 minutes)

Here, in the context of the pricing of a book, students are given two points on the graph of a linear equation and are expected to draw the graph, determine the rate of change, and answer questions by referring to the graph.

Point out that the horizontal axis does not start at 0. Ask students the following question:

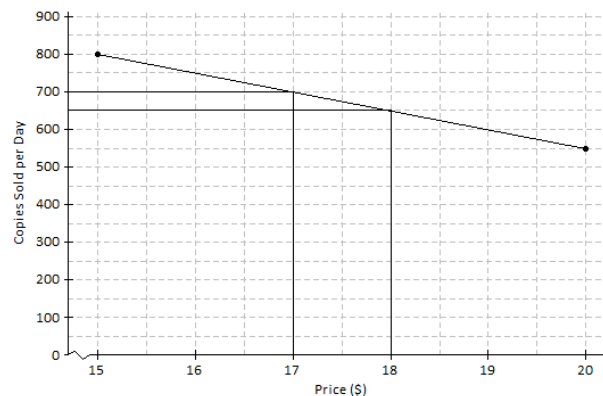
- Why do you think the first value is at 15?
 - *The online bookseller may not sell the book for less than \$15.*

In Exercise 8, students are asked to find the rate of change; it might be worthwhile to check that they are using the scales on the axes, not purely counting squares.

For Exercises 9 and 10, encourage students to show their work by drawing vertical and horizontal lines on the graph, as shown in the sample student answers below.

Let students work with a partner. Then, discuss and confirm answers as a class.

An online bookseller has a new book in print. The company estimates that if the book is priced at \$15, then 800 copies of the book will be sold per day, and if the book is priced at \$20, then 550 copies of the book will be sold per day.



6. Identify the ordered pairs given in the problem. Then, plot both on the graph.

The ordered pairs are (15, 800) and (20, 550). See graph above.

7. Assume that the relationship between the number of books sold and the price is linear. (In other words, assume that the graph is a straight line.) Using a straight-edge, draw the line that passes through the two points.

See graph above.

8. What is the rate of change relating number of copies sold to price?

Between the points (15, 800) and (20, 550), the run is 5 and the rise is $-(800 - 550) = -250$. So, the rate of change is $\frac{-250}{50} = -50$.

9. Based on the graph, if the company prices the book at \$18, about how many copies of the book can they expect to sell per day?

650

10. Based on the graph, approximately what price should the company charge in order to sell 700 copies of the book per day?

\$17

Closing (5 minutes)

If time allows, consider posing the following questions:

- How would you interpret the meaning of the rate of change (-50) from Exercise 8?
 - *Answers will vary; pay careful attention to wording. The number of copies sold would decrease by 50 units as the price increased by \$1, or for every dollar increase in the price, the number of copies sold would decrease by 50 units.*
- Does it seem reasonable that the number of copies sold would decrease with respect to an increase in price?
 - *Yes, if the book was really expensive, someone may not want to buy it. If the cost remained low, it seems reasonable that more people would want to buy it.*
- How is the information given in the truck rental problem different than the information given in the book pricing problem?
 - *In the book pricing problem, the information was given as ordered pairs. In the truck rental problem, the information was given in the form of a slope and initial value.*

Lesson Summary

When the rate of change, b , and an initial value, a , are given in the context of a problem, the linear function that models the situation is given by the equation $y = a + bx$.

The rate of change and initial value can also be used to sketch the graph of the linear function that models the situation.

When two or more ordered pairs are given in the context of a problem that involves a linear relationship, the graph of the linear function is the line that passes through those points. The linear function can be represented by the equation of that line.

Exit Ticket (10 minutes)

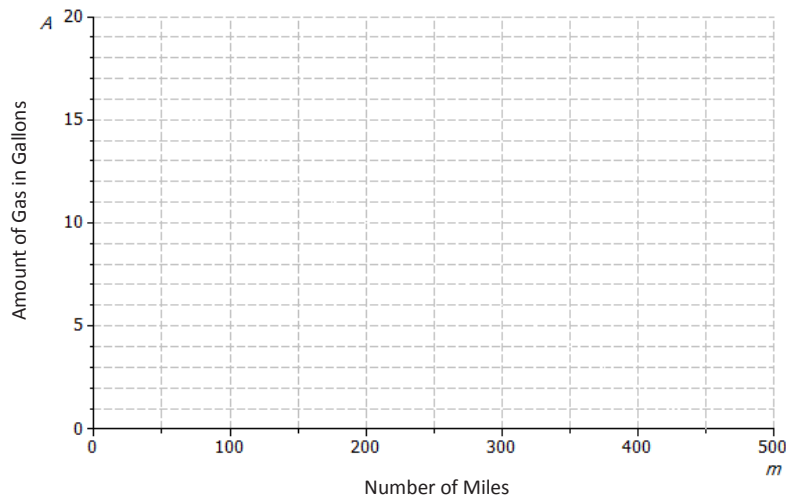
Name _____

Date _____

Lesson 3: Representations of a Line

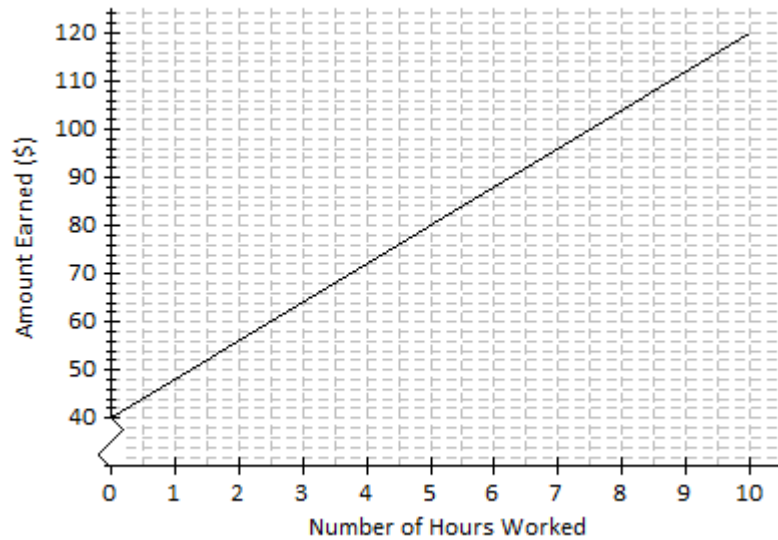
Exit Ticket

1. A car starts a journey with 18 gallons of fuel. Assuming a constant rate, the car will consume 0.04 gallons for every mile driven. Let A represent the amount of gas in the tank (in gallons) and m represent the number of miles driven.



- a. How much gas is in the tank if 0 miles have been driven? How would this be represented on the axes above?
- b. What is the rate of change that relates the amount of gas in the tank to the number of miles driven? Explain what it means within the context of the problem.
- c. On the axes above, draw the line, or the graph, of the linear function that relates A to m .
- d. Write the linear function that models the relationship between the number of miles driven and the amount of gas in the tank.

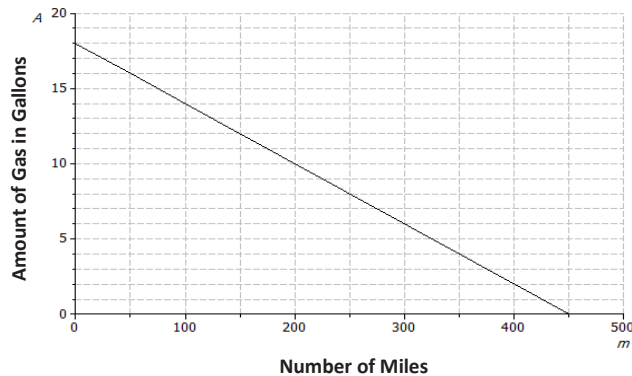
2. Andrew works in a restaurant. The graph below shows the relationship between the amount Andrew earns and the number of hours he works.



- a. If Andrew works for 7 hours, approximately how much does he earn?
- b. Estimate how long Andrew has to work in order to earn \$64.
- c. What is the rate of change of the function given by the graph? Interpret the value within the context of the problem.

Exit Ticket Sample Solutions

1. A car starts a journey with 18 gallons of fuel. Assuming a constant rate, the car will consume 0.04 gallons for every mile driven. Let A represent the amount of gas in the tank (in gallons) and m represent the number of miles driven.



- a. How much gas is in the tank if 0 miles have been driven? How would this be represented on the axes above?

There are 18 gallons in the tank. This would be represented as (0, 18), the initial value, on the graph above.

- b. What is the rate of change that relates the amount of gas in the tank to the number of miles driven? Explain what it means within the context of the problem.

-0.04; the car consumes 0.04 gallons for every mile driven. It relates the amount of fuel to the miles driven.

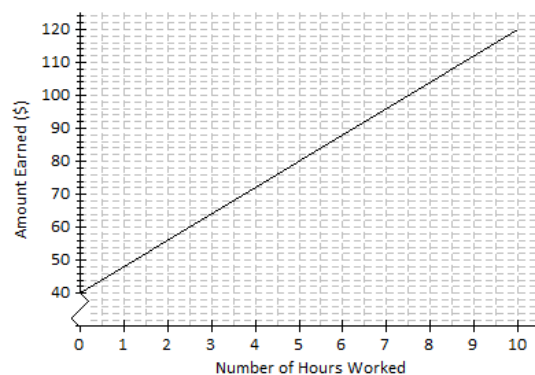
- c. On the axes above, draw the line, or the graph, of the linear function that relates A to m .

See graph above. Students can plot the initial value (0, 18) and then use the rate of change to identify additional points as needed. A 50 unit increase in m results in a 2 unit decrease for A , so another point on the line is (50, 16).

- d. Write the linear function that models the relationship between the number of miles driven and the amount of gas in the tank.

$$A = 18 - 0.04m \text{ or } A = -0.04m + 18$$

2. Andrew works in a restaurant. The graph below shows the relationship between the amount Andrew earns and the number of hours he works.



- a. If Andrew works for 7 hours, approximately how much does he earn?

\$96

- b. Estimate how long Andrew has to work in order to earn \$64.

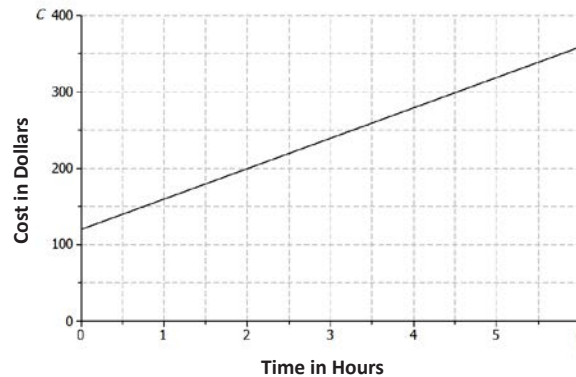
3 hours

- c. What is the rate of change of the function given by the graph? Interpret the value within the context of the problem.

Using the ordered pairs (7, 96) and (3, 64), the slope is 8. It means that the amount Andrew earns increases by \$8 for every hour worked.

Problem Set Sample Solutions

1. A plumbing company charges a service fee of \$120, plus \$40 for each hour worked. In this problem, you will sketch the graph of the linear function relating the cost to the customer (in dollars), C , to the time worked by the plumber (in hours), t , on the axes below.



- a. If the plumber works for 0 hours, what will be the cost to the customer? How will this be shown on the graph?

\$120. This is shown on the graph by the point (0, 120).

- b. What is the rate of change that relates cost to time?

40

- c. Write a linear function that models the relationship between the hours worked and cost to the customer.

$$C = 40t + 120$$

- d. Find the cost to the customer if the plumber works for each of the following number of hours.

- i. 1 hour

\$160

- ii. 2 hours

\$200

- iii. 6 hours

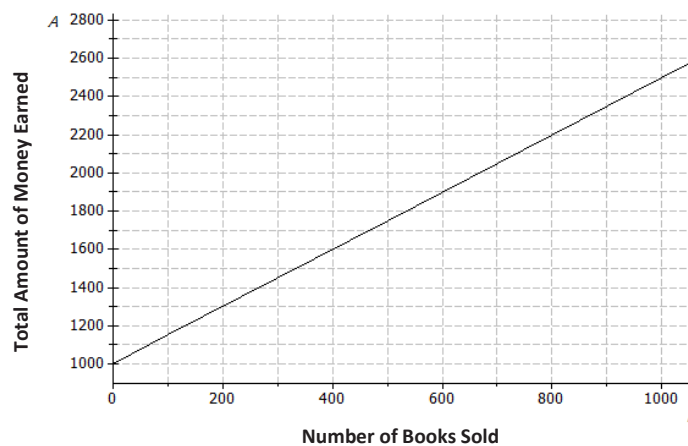
\$360

- e. Plot the points for these times on the coordinate plane, and use a straight-edge to draw the line through the points.

See graph above.

2. An author has been paid a writer's fee of \$1,000 and will additionally receive \$1.50 for every copy of the book that is sold.

- a. Sketch the graph of the linear function that relates the total amount of money earned, A , to the number of books sold, n , on the axes below.



- b. What is the rate of change that relates the total amount of money earned to the number of books sold?

1.5

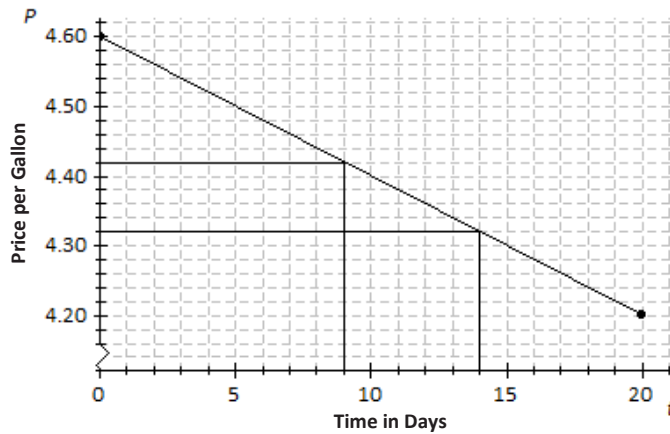
- c. What is the initial value of the linear function based on the graph?

1,000

- d. Let the number of books sold be n and the total amount earned be A . Construct a linear function that models the relationship between the number of books sold and the total amount earned.

$A = 1.5n + 1000$

3. Suppose that the price of gasoline has been falling. At the beginning of last month ($t = 0$), the price was \$4.60 per gallon. Twenty days later ($t = 20$), the price was \$4.20 per gallon. Assume that the price per gallon, P , fell at a constant rate over the twenty days.



- Identify the ordered pairs given in the problem. Plot both points on the coordinate plane above.
(0, 4.60) and (20, 4.20); see graph above.
- Using a straight-edge, draw the line that contains the two points.
See graph above.
- What is the rate of change? What does it mean within the context of the problem?
*Using points (0, 4.60) and (20, 4.20), the rise is -0.4 per a run of 20.
So, the rate of change is $\frac{-0.4}{20} = -0.02$.
The price of gas is decreasing \$0.02 each day.*
- What is the function that models the relationship between the number of days and the price per gallon?
 $P = -0.02t + 4.6$
- What was the price of gasoline after 9 days?
\$4.42; see graph above.
- After how many days was the price \$4.32?
14 days; see graph above.