



Families and Communities

Transition and Learning Center Cards



Core Knowledge®

Core Knowledge Language Arts • New York Edition

PRESCHOOL

Creative Commons Licensing

This work is licensed under a Creative Commons Attribution-NonCommercial-ShareAlike 3.0 Unported License.



You are free:

to Share — to copy, distribute and transmit the work

to Remix — to adapt the work

Under the following conditions:

Attribution — You must attribute the work in the following manner:

This work is based on an original work of the Core Knowledge® Foundation made available through licensing under a Creative Commons Attribution-NonCommercial-ShareAlike 3.0 Unported License. This does not in any way imply that the Core Knowledge Foundation endorses this work.

Noncommercial — You may not use this work for commercial purposes.

Share Alike — If you alter, transform, or build upon this work, you may distribute the resulting work only under the same or similar license to this one.

With the understanding that:

For any reuse or distribution, you must make clear to others the license terms of this work. The best way to do this is with a link to this web page:

<http://creativecommons.org/licenses/by-nc-sa/3.0/>

CREDITS

Every effort has been taken to trace and acknowledge copyrights. The editors tender their apologies for any accidental infringement where copyright has proved untraceable. They would be pleased to insert the appropriate acknowledgment in any subsequent edition of this publication. Trademarks and trade names are shown in this publication for illustrative purposes only and are the property of their respective owners. The references to trademarks and trade names given herein do not affect their validity.

All photographs are used under license from Shutterstock, Inc. unless otherwise noted.

Copyright © 2013 Core Knowledge Foundation
www.coreknowledge.org

All Rights Reserved.

Core Knowledge Language Arts is a trademark
of the Core Knowledge Foundation.

Trademarks and trade names are shown in this book strictly for illustrative and educational purposes and are the property of their respective owners. References herein should not be regarded as affecting the validity of said trademarks and trade names.

House



House

Suggested phrases to use:

- Did you feed the baby **and** put her to bed?
- I will cook dinner and you can set the table.
- **Before** I go to work I have to eat breakfast **and** get dressed.
- The bowls are **on top of** the table.
- Let's vacuum the rug **under** the table.
- The silverware is **beside** the plate.
- Let's play a board game. You go **first** and I'll go **second**.
- Let's take the dog for a walk **outside**.



Student conversations:

- Help students give each other single-step and multi step directions to complete household chores and routines
- Facilitate extended peer conversations

Facilitating emergent writing:

- Write grocery lists and chores charts
- Make and sign birthday cards
- Write plans for birthdays and other traditions and celebrations on a calendar

Vocabulary

son	step mom
daughter	step dad
sister	step sister
brother	step brother
baby	pet
mom/mother	celebration
dad/father	tradition
parents	chores
grandmother	
grandfather	
grandparents	
step parents	



Parts of a Book

Ask students to point to:

- Front cover
- Back cover
- Pages
- Spine
- Title
- A word
- A letter
- Title page
- A page number

Ask students:

- What is the person called who writes the words?
 - What does the author do?
 - What is the person called who draws the pictures?
 - What does the illustrator do?
 - What does the title tell us?
 - Show me how to turn the pages.
 - *[Point to the first word in a line of text]*
- Show me which way I should read.
- Point to just one letter in this word.
 - Do we read the words or the pictures?



Parts of a Book

Families and Communities | TRANSITION CARDS
PRESCHOOL

Core Knowledge Language Arts
New York Edition PRESCHOOL



walk the dog

Routines

Families and Communities | TRANSITION CARDS
PRESCHOOL

Core Knowledge Language Arts
New York Edition PRESCHOOL



load dishwasher, put away dishes

Routines

Families and Communities | TRANSITION CARDS
PRESCHOOL

Core Knowledge Language Arts
New York Edition PRESCHOOL



go to the park

Routines

Families and Communities | TRANSITION CARDS
PRESCHOOL

Core Knowledge Language Arts
New York Edition PRESCHOOL



go to the movies

Routines

Families and Communities | TRANSITION CARDS
PRESCHOOL

Core Knowledge Language Arts
New York Edition PRESCHOOL





wash clothes

Routines

Families and Communities | TRANSITION CARDS
PRESCHOOL

Core Knowledge Language Arts
New York Edition PRESCHOOL



take a bath

Routines

Families and Communities | TRANSITION CARDS
PRESCHOOL

Core Knowledge Language Arts
New York Edition PRESCHOOL



eat lunch

Routines

Families and Communities | TRANSITION CARDS
PRESCHOOL

Core Knowledge Language Arts
New York Edition PRESCHOOL



eat breakfast

Routines

Families and Communities | TRANSITION CARDS
PRESCHOOL

Core Knowledge Language Arts
New York Edition PRESCHOOL





make food

Routines

Families and Communities | TRANSITION CARDS
PRESCHOOL

Core Knowledge Language Arts
New York Edition PRESCHOOL



eat dinner

Routines

Families and Communities | TRANSITION CARDS
PRESCHOOL

Core Knowledge Language Arts
New York Edition PRESCHOOL



put toys away

Routines

Families and Communities | TRANSITION CARDS
PRESCHOOL

Core Knowledge Language Arts
New York Edition PRESCHOOL



get ready for bed

Routines

Families and Communities | TRANSITION CARDS
PRESCHOOL

Core Knowledge Language Arts
New York Edition PRESCHOOL





brush hair

Routines

Families and Communities | TRANSITION CARDS
PRESCHOOL

Core Knowledge Language Arts
New York Edition PRESCHOOL



brush teeth

Routines

Families and Communities | TRANSITION CARDS
PRESCHOOL

Core Knowledge Language Arts
New York Edition PRESCHOOL



play board games

Routines

Families and Communities | TRANSITION CARDS
PRESCHOOL

Core Knowledge Language Arts
New York Edition PRESCHOOL



read bedtime story

Routines

Families and Communities | TRANSITION CARDS
PRESCHOOL

Core Knowledge Language Arts
New York Edition PRESCHOOL





wipe countertops

Routines

Families and Communities | TRANSITION CARDS PRESCHOOL

Core Knowledge Language Arts
New York Edition PRESCHOOL



work in the garden

Routines

Families and Communities | TRANSITION CARDS PRESCHOOL

Core Knowledge Language Arts
New York Edition PRESCHOOL



Core Knowledge Language Arts
New York Edition PRESCHOOL



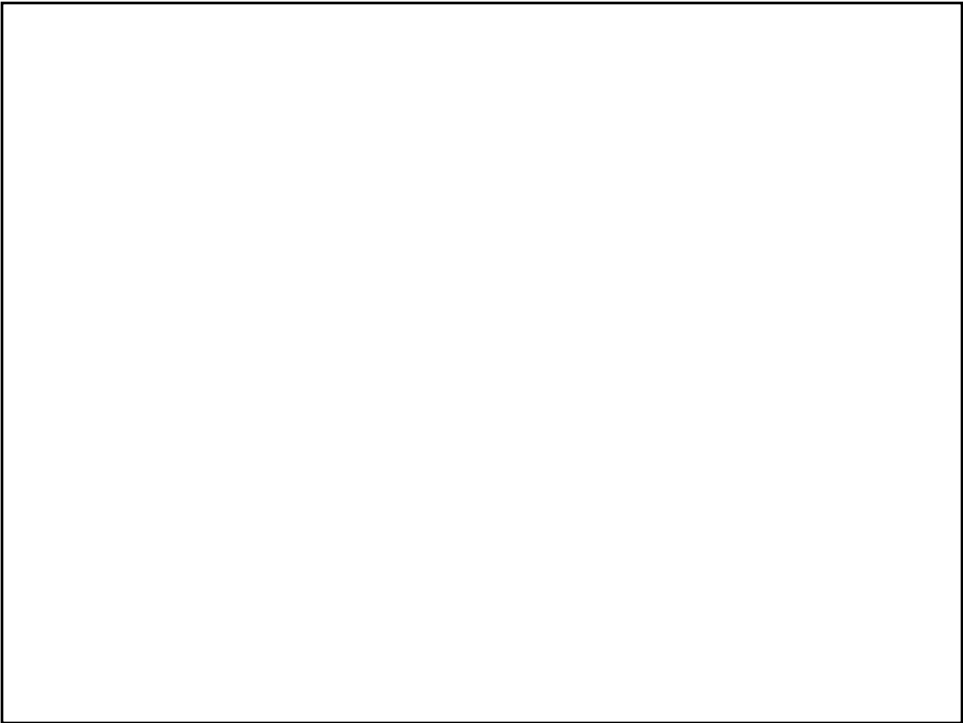
feed pet

Routines

Families and Communities | TRANSITION CARDS PRESCHOOL

Core Knowledge Language Arts
New York Edition PRESCHOOL





blue

Colors

Families and Communities | TRANSITION CARDS
PRESCHOOL

Core Knowledge Language Arts
New York Edition PRESCHOOL



red

Colors

Families and Communities | TRANSITION CARDS
PRESCHOOL

Core Knowledge Language Arts
New York Edition PRESCHOOL



white

Colors

Families and Communities | TRANSITION CARDS
PRESCHOOL

Core Knowledge Language Arts
New York Edition PRESCHOOL



yellow

Colors

Families and Communities | TRANSITION CARDS
PRESCHOOL

Core Knowledge Language Arts
New York Edition PRESCHOOL





green

Colors

Families and Communities | TRANSITION CARDS
PRESCHOOL

Core Knowledge Language Arts
New York Edition PRESCHOOL



orange

Colors

Families and Communities | TRANSITION CARDS
PRESCHOOL

Core Knowledge Language Arts
New York Edition PRESCHOOL



brown

Colors

Families and Communities | TRANSITION CARDS
PRESCHOOL

Core Knowledge Language Arts
New York Edition PRESCHOOL



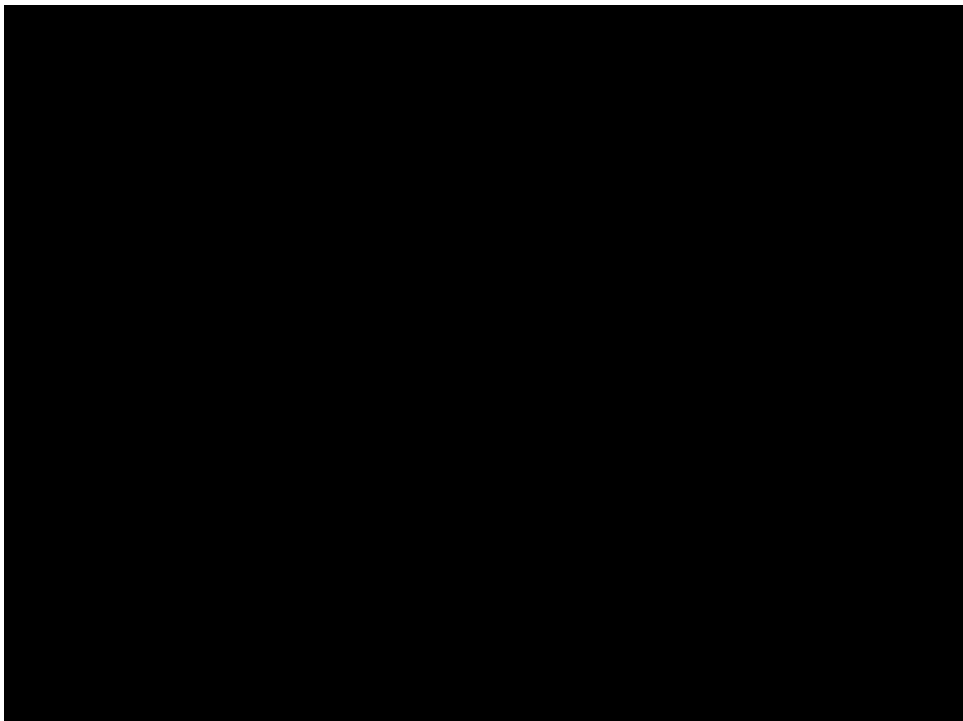
purple

Colors

Families and Communities | TRANSITION CARDS
PRESCHOOL

Core Knowledge Language Arts
New York Edition PRESCHOOL







black

Colors

Families and Communities | TRANSITION CARDS PRESCHOOL

Core Knowledge Language Arts
New York Edition PRESCHOOL





red

Colors

Families and Communities | TRANSITION CARDS
PRESCHOOL

Core Knowledge Language Arts
New York Edition PRESCHOOL



red

Colors

Families and Communities | TRANSITION CARDS
PRESCHOOL

Core Knowledge Language Arts
New York Edition PRESCHOOL



red

Colors

Families and Communities | TRANSITION CARDS
PRESCHOOL

Core Knowledge Language Arts
New York Edition PRESCHOOL



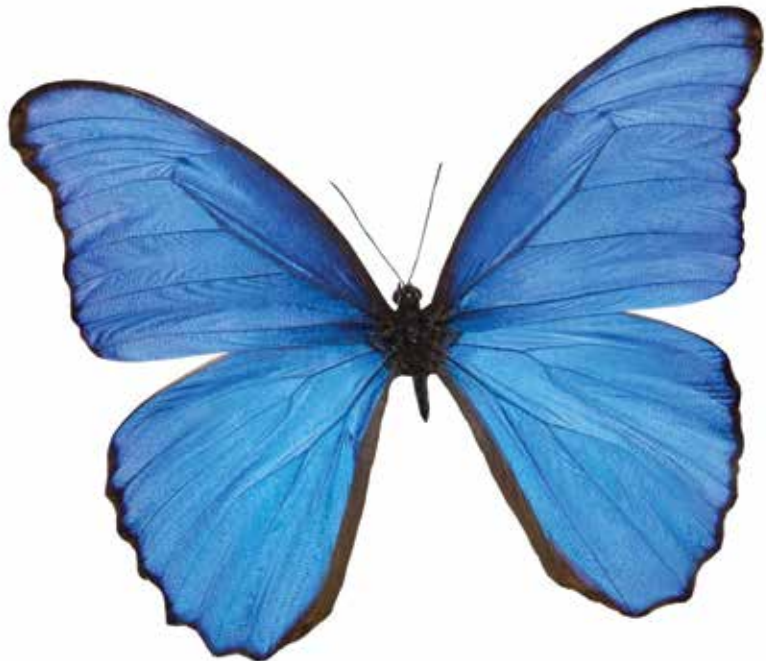
red

Colors

Families and Communities | TRANSITION CARDS
PRESCHOOL

Core Knowledge Language Arts
New York Edition PRESCHOOL





blue

Colors

Families and Communities | TRANSITION CARDS
PRESCHOOL

Core Knowledge Language Arts
New York Edition PRESCHOOL



blue

Colors

Families and Communities | TRANSITION CARDS
PRESCHOOL

Core Knowledge Language Arts
New York Edition PRESCHOOL



blue

Colors

Families and Communities | TRANSITION CARDS
PRESCHOOL

Core Knowledge Language Arts
New York Edition PRESCHOOL



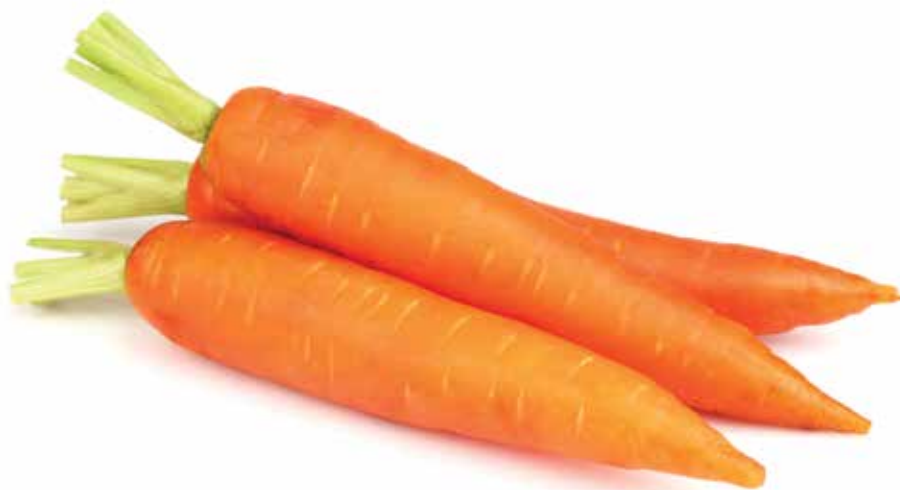
blue

Colors

Families and Communities | TRANSITION CARDS
PRESCHOOL

Core Knowledge Language Arts
New York Edition PRESCHOOL





orange

Colors

Families and Communities | TRANSITION CARDS
PRESCHOOL

Core Knowledge Language Arts
New York Edition PRESCHOOL



orange

Colors

Families and Communities | TRANSITION CARDS
PRESCHOOL

Core Knowledge Language Arts
New York Edition PRESCHOOL



orange

Colors

Families and Communities | TRANSITION CARDS
PRESCHOOL

Core Knowledge Language Arts
New York Edition PRESCHOOL



orange

Colors

Families and Communities | TRANSITION CARDS
PRESCHOOL

Core Knowledge Language Arts
New York Edition PRESCHOOL





green

Colors

Families and Communities | TRANSITION CARDS
PRESCHOOL

Core Knowledge Language Arts
New York Edition PRESCHOOL



green

Colors

Families and Communities | TRANSITION CARDS
PRESCHOOL

Core Knowledge Language Arts
New York Edition PRESCHOOL



green

Colors

Families and Communities | TRANSITION CARDS
PRESCHOOL

Core Knowledge Language Arts
New York Edition PRESCHOOL



green

Colors

Families and Communities | TRANSITION CARDS
PRESCHOOL

Core Knowledge Language Arts
New York Edition PRESCHOOL





yellow

Colors

Families and Communities | TRANSITION CARDS
PRESCHOOL

Core Knowledge Language Arts
New York Edition PRESCHOOL



yellow

Colors

Families and Communities | TRANSITION CARDS
PRESCHOOL

Core Knowledge Language Arts
New York Edition PRESCHOOL



yellow

Colors

Families and Communities | TRANSITION CARDS
PRESCHOOL

Core Knowledge Language Arts
New York Edition PRESCHOOL



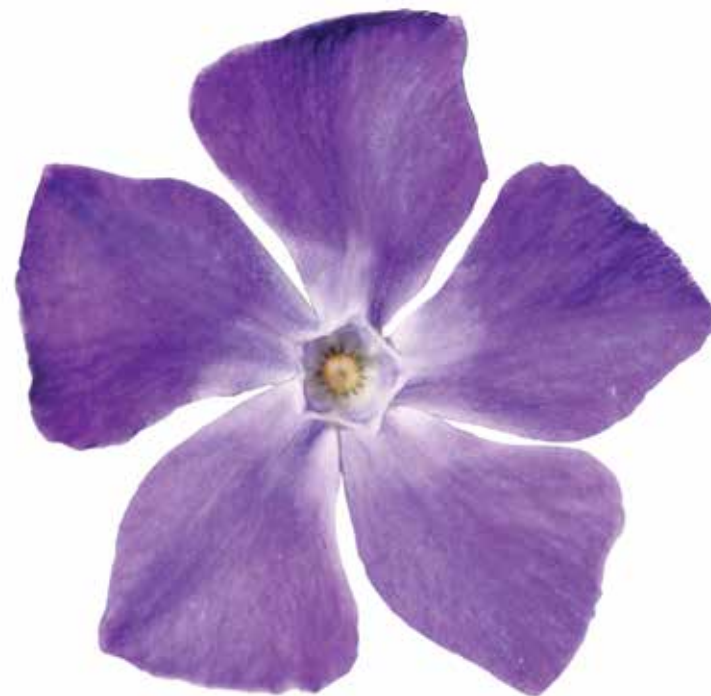
yellow

Colors

Families and Communities | TRANSITION CARDS
PRESCHOOL

Core Knowledge Language Arts
New York Edition PRESCHOOL





purple

Colors

Families and Communities | TRANSITION CARDS
PRESCHOOL

Core Knowledge Language Arts
New York Edition PRESCHOOL



purple

Colors

Families and Communities | TRANSITION CARDS
PRESCHOOL

Core Knowledge Language Arts
New York Edition PRESCHOOL



purple

Colors

Families and Communities | TRANSITION CARDS
PRESCHOOL

Core Knowledge Language Arts
New York Edition PRESCHOOL



purple

Colors

Families and Communities | TRANSITION CARDS
PRESCHOOL

Core Knowledge Language Arts
New York Edition PRESCHOOL





brown

Colors

Families and Communities | TRANSITION CARDS
PRESCHOOL

Core Knowledge Language Arts
New York Edition PRESCHOOL



brown

Colors

Families and Communities | TRANSITION CARDS
PRESCHOOL

Core Knowledge Language Arts
New York Edition PRESCHOOL



brown

Colors

Families and Communities | TRANSITION CARDS
PRESCHOOL

Core Knowledge Language Arts
New York Edition PRESCHOOL



brown

Colors

Families and Communities | TRANSITION CARDS
PRESCHOOL

Core Knowledge Language Arts
New York Edition PRESCHOOL





black

Colors

Families and Communities | TRANSITION CARDS
PRESCHOOL

Core Knowledge Language Arts
New York Edition PRESCHOOL



black

Colors

Families and Communities | TRANSITION CARDS
PRESCHOOL

Core Knowledge Language Arts
New York Edition PRESCHOOL



black

Colors

Families and Communities | TRANSITION CARDS
PRESCHOOL

Core Knowledge Language Arts
New York Edition PRESCHOOL



black

Colors

Families and Communities | TRANSITION CARDS
PRESCHOOL

Core Knowledge Language Arts
New York Edition PRESCHOOL





white

Colors

Families and Communities | TRANSITION CARDS
PRESCHOOL

Core Knowledge Language Arts
New York Edition PRESCHOOL



white

Colors

Families and Communities | TRANSITION CARDS
PRESCHOOL

Core Knowledge Language Arts
New York Edition PRESCHOOL



white

Colors

Families and Communities | TRANSITION CARDS
PRESCHOOL

Core Knowledge Language Arts
New York Edition PRESCHOOL



white

Colors

Families and Communities | TRANSITION CARDS
PRESCHOOL

Core Knowledge Language Arts
New York Edition PRESCHOOL



CORE KNOWLEDGE LANGUAGE ARTS

SERIES EDITOR-IN-CHIEF

E. D. Hirsch, Jr.

PRESIDENT

Linda Bevilacqua

EDITORIAL STAFF

Carolyn Gosse, Senior Editor - Preschool
Khara Turnbull, Materials Development Manager
Michelle L. Warner, Senior Editor - Listening & Learning

Mick Anderson
Robin Blackshire
Maggie Buchanan
Paula Coyner
Sue Fulton
Sara Hunt
Erin Kist
Robin Luecke
Rosie McCormick
Cynthia Peng
Liz Pettit
Ellen Sadler
Deborah Samley
Lauren Simmons
Diane Auger Smith
Sarah Zelinke

DESIGN AND GRAPHICS STAFF

Scott Ritchie, Creative Director
Kim Berrall
Michael Donegan
Liza Greene
Matt Leech
Bridget Moriarty
Lauren Pack

CONSULTING PROJECT MANAGEMENT SERVICES

ScribeConcepts.com

ADDITIONAL CONSULTING SERVICES

Ang Blanchette
Dorrit Green
Carolyn Pinkerton

ACKNOWLEDGMENTS

These materials are the result of the work, advice, and encouragement of numerous individuals over many years. Some of those singled out here already know the depth of our gratitude; others may be surprised to find themselves thanked publicly for help they gave quietly and generously for the sake of the enterprise alone. To helpers named and unnamed we are deeply grateful.

CONTRIBUTORS TO EARLIER VERSIONS OF THESE MATERIALS

Susan B. Albaugh, Kazuko Ashizawa, Nancy Braier, Kathryn M. Cummings, Michelle De Groot, Diana Espinal, Mary E. Forbes, Michael L. Ford, Ted Hirsch, Danielle Knecht, James K. Lee, Diane Henry Leipzig, Martha G. Mack, Liana Mahoney, Isabel McLean, Steve Morrison, Julianne K. Munson, Elizabeth B. Rasmussen, Laura Tortorelli, Rachael L. Shaw, Sivan B. Sherman, Miriam E. Vidaver, Catherine S. Whittington, Jeannette A. Williams

We would like to extend special recognition to Program Directors Matthew Davis and Souzanne Wright who were instrumental to the early development of this program.

SCHOOLS

We are truly grateful to the teachers, students, and administrators of the following schools for their willingness to field test these materials and for their invaluable advice: Capitol View Elementary, Challenge Foundation Academy (IN), Community Academy Public Charter School, Lake Lure Classical Academy, Lepanto Elementary School, New Holland Core Knowledge Academy, Paramount School of Excellence, Pioneer Challenge Foundation Academy, New York City PS 26R (The Carteret School), PS 30X (Wilton School), PS 50X (Clara Barton School), PS 96Q, PS 102X (Joseph O. Loretan), PS 104Q (The Bays Water), PS 214K (Michael Friedsam), PS 223Q (Lyndon B. Johnson School), PS 308K (Clara Cardwell), PS 333Q (Goldie Maple Academy), Sequoyah Elementary School, South Shore Charter Public School, Spartanburg Charter School, Steed Elementary School, Thomas Jefferson Classical Academy, Three Oaks Elementary, West Manor Elementary.

And a special thanks to the CKLA Pilot Coordinators Anita Henderson, Yasmin Lugo-Hernandez, and Susan Smith, whose suggestions and day-to-day support to teachers using these materials in their classrooms was critical.



